

	R1 Series	3.91mm	4.81mm
Diode	LED type Pixel density (pixel/m²) Viewing angle(°)	SMD 3 in 1 65409 H200 / V200	SMD 3 in 1 43243 H200 / V200
Module	Dimension (W×H×D mm) Resolution (W×H pixel)	250 x 250 63 x 63	250 x 250 51 x 51
Cabinet	Material Weight (kg/cabinet) Dimension (W×H×D mm) Resolution (W×H pixel) Ingress protection Access	Aluminium 7.3 500 x 500 127 x 127 IP65 Front / rear	Aluminium 7.3 500 x 500 103 x 103 IP65 Front / rear
Signal & Power	Input signal Input power (V) Avg. power consumption (W/m²) Max. power consumption (W/m²)	DVI, DP, HDMI, ect. AC100-240 100 200	DVI, DP, HDMI, ect. AC100-240 100 200
Performance	Driving mode (S) Contrast ratio Gray scale (bit) Brightness (nits) Refresh rate (Hz) Colour temperature (k) Lifespan (hour)	4 ≥3000:1 18 3000 ≥3840 6500-8500 100000	≥3000:1 18 3000 ≥3840 6500-8500 100000
Application	Working environment Working temperature (°c) Storage temperature (°c) Working humidity (%) Storage humidity (%)	Outdoor/ Indoor -10~40 -40~80 5~95 5~95	Outdoor/Indoor -10~40 -40~80 5~95 5~95

Durable and versatile
indoor and outdoor cabinet





- 7.3KG**
Light cabinet
- 250 x 250mm**
Flexible module size
- 500 x 500mm**
Flexible cabinet size
- 16 bit**
High gray scale
- 8000:1**
High contrast ratio
- 3840Hz**
High refresh rate
- 90mm**
Thin cabinet
- 3000 nits**
High brightness
- Aluminium**
High strength cabinet
- 50mm**
Slim architecture

R1 outdoor die-casting reantal LED display

R1 outdoor die-casting LED display is the second generation rental product Kensen launched, with more than 20 features upgraded and improved, while it only weighs only 7.3kg per cabinet. R1 featuring die-casting aluminum

architecture, it is more reliable and durable for outdoor applications. As an aluminum cabinet, it can also be used as an indoor product for rental. With a gray scale of 16 bit, R1 delivers pefect visual experience.

7.3KG
per cabinet

90mm
maximum thickness

Thin and light

As an outdoor product with new aluminium structure design, R1 weighs only 7.3kg per cabient and measures only 90mm thick, it makes installation much easier and saves shipping cost.



Flexible module and cabinet size

R1 cabinet is designed into two sizes, 500mm by 500mm and 500mm by 1000mm, making it extremely convenient to assemble a display with ideal ratio and size.



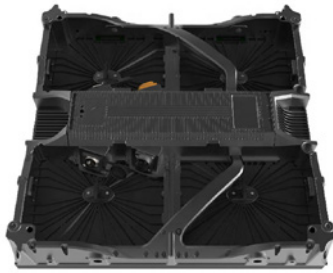
Up to
3000 nits
brightness

Up to
18 bit
gray scale



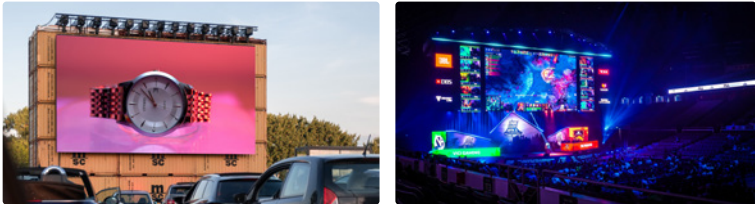
High brightness and high gray scale, more eye-catching and readable

As an outdoor product, R1 LED featuring hight brightness of 3000 nits and 18 bit gray scale, bringing an amazing and immersive visual experience, make every detail on display more eye-catching and readable.



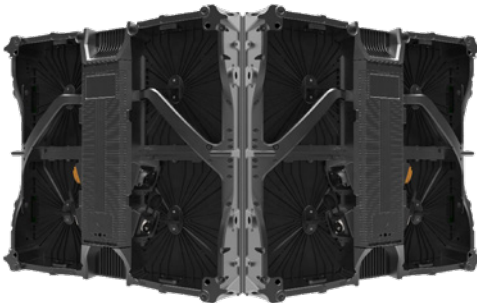
Aluminum structure, perfect alignment flatness

Cabinets are finished with module extrusion, result in precise and consistent cabinet architecture, its accuracy is up to 0.05mm after CNC processing, a finely processed cabinet brings a better cabient alignment and visual experience.



Applicable in different enviroments

R1 is weatherproof product with high brightness, it can works properly for most outdoor enviroments, at the same time, it can also be used for indoor events thanks to its light aluminum cabinet and wide brightness range.



Curve lock design, free curve cabinet layout

Cabinet is designed with a new curve lock, cabinets can be assembled with adjustable curve to meet different installation enviroments, making it much more flexible to make a concave or convex layout display to deliver more creative content.